

# REINTEGRATION STRATEGY: A CHALLENGE THAT REQUIRES EVERYONE'S COMMITMENT

[alvarogonzalez@presidencia.gov.co](mailto:alvarogonzalez@presidencia.gov.co)



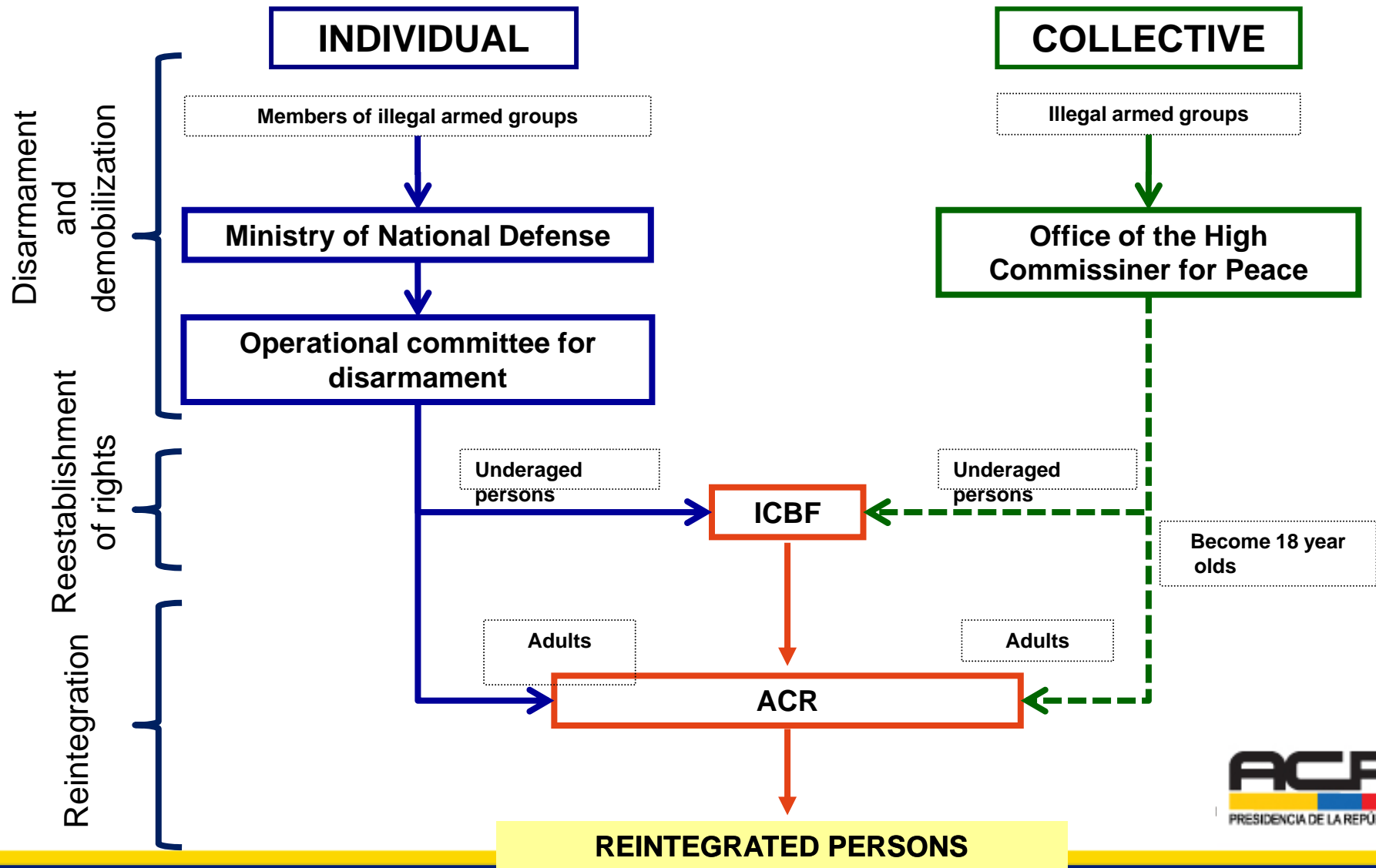
# Colombia: General Information

Agencia Colombiana  
para la Reintegración  
República de Colombia



- Located at the Northwestern tip of South America .
- Geographic Area: 2,070,408 km<sup>2</sup>
- Population: 45,508,208
- Colombia has a democratic model, the President of the Republic of Colombia, Mr. Juan Manuel Santos.
- Life Expectancy: 73 years (World Bank).
- (GDP) per capita: US \$ 4,930 (World Bank, 2009).

# DDR Route in Colombia



# The State Policy Evolved from Reinsertion to Reintegration, Which Warrants Sustainability of the Peace Process in the Long-Term

Agencia Colombiana  
para la Reintegración  
República de Colombia



The ACR designs, executes, and assesses the State Policy aimed towards the social and economic reintegration of individuals and armed groups outside the law, who have voluntarily demobilized, on an individual or collective basis.

## Reinsertion

### LONG-TERM

- No time constraints but limited in rights.
- Committed to reintegration and to the results of demobilized individuals.

### COMMUNITY

- Generating confidence and promoting coexistence in communities affected by violence.
- Transforming communities into actors and coexistence.

## Reintegration

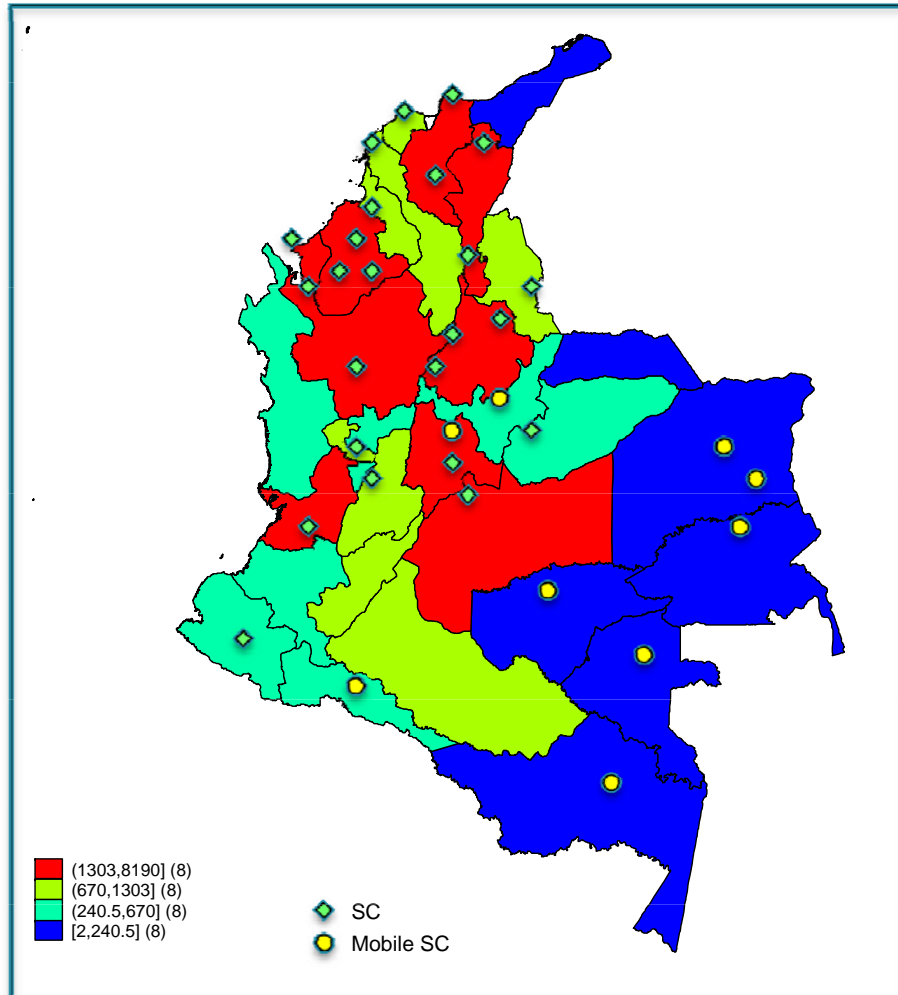
### SUSTAINABILITY

- Does not provide welfare.
- Guarantees the autonomy of demobilized individuals.
- Generates realistic expectations in line with the availability of institutional and financial resources.

This Policy become an instrument for peace building and an important strategy to avoid the repetition of violent acts.

36,099 participants have been assisted by the ACR at least once since December 2009 and can be located and tracked in the ACR's information system.

Agencia Colombiana  
para la Reintegración  
República de Colombia



The Service Centers provide continued service and benefits to ex-combatants regardless of their residence. It is possible to constantly monitor an ex-combatant's process without limiting his/her mobility within the country.

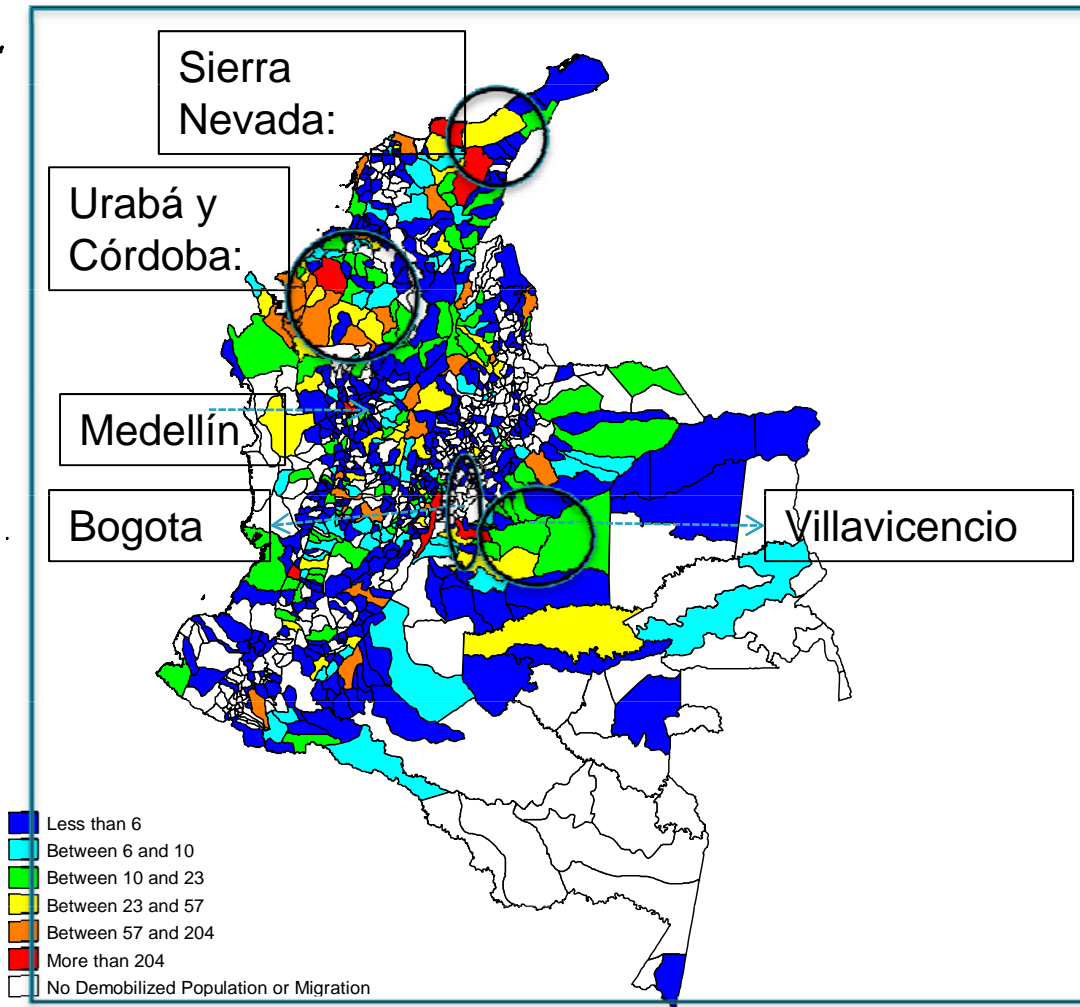
Colombia has 1120 municipalities. 36,099 ex-combatants can be located in 768 municipalities. 16 municipalities (main cities) concentrate 50% of the population that has been assisted by the Agency during the last 2 years:

- Psychosocial Support
- Health and Education Support
- Job training
- Employability
- Economic Insertion
- Communitarian activities



# Mobility of Ex-Combatants in Colombia. Sending Areas. Dec 2009- Oct 2011

Agencia Colombiana  
para la Reintegración  
República de Colombia



•Main Reasons exposed for mobility are:

- Job Changes
- Family motives
- Security Issues
- Lack of economic opportunities

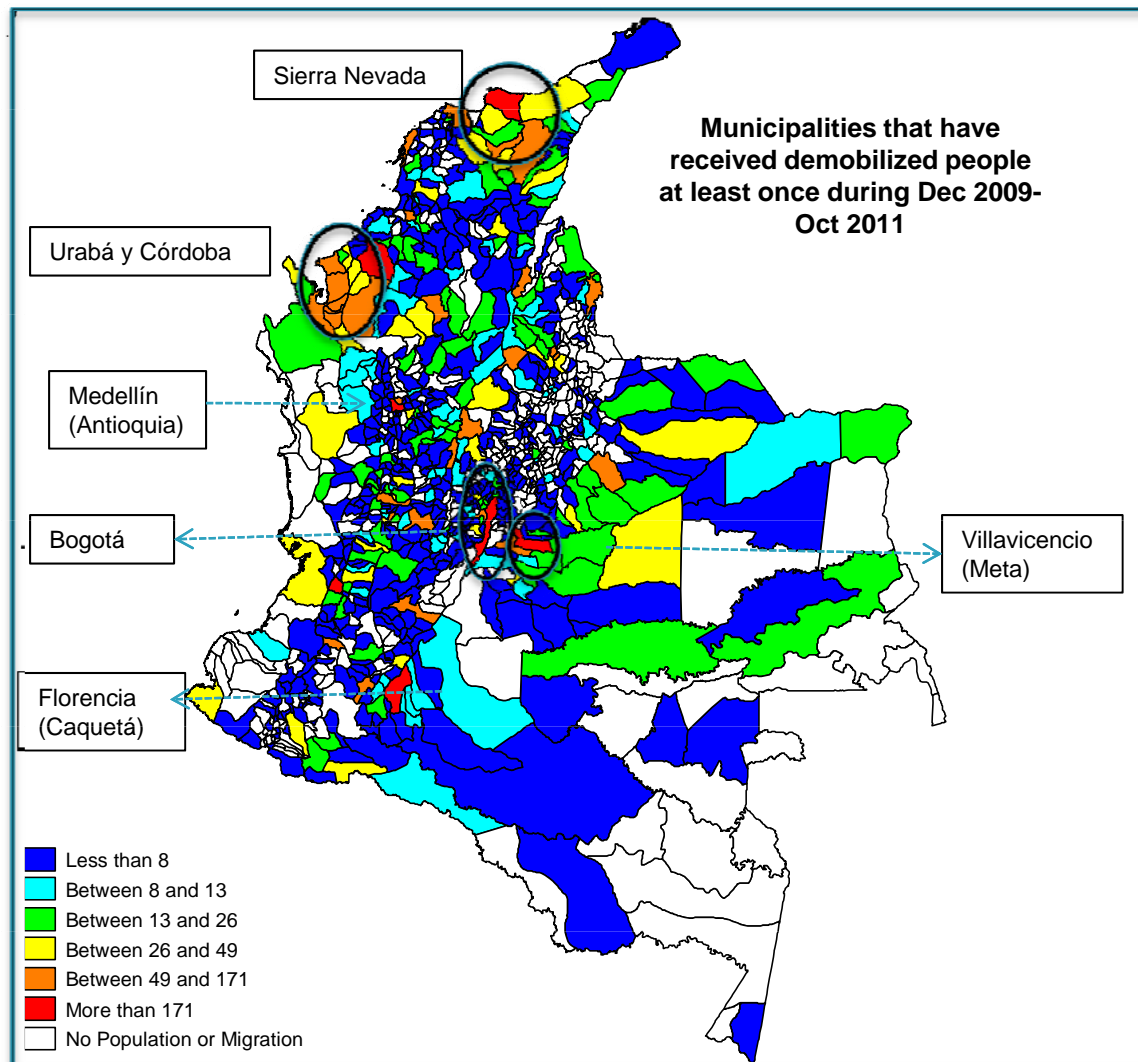
•24% of the assisted participants have changed municipalities in this period.

•87% of the demobilized have moved only once.13% have moved twice or more.

•20 Municipalities concentrate 50% of migration events.

# Mobility of Ex-Combatants in Colombia Receiving Areas. Dec 2009-Oct 2011

Agencia Colombiana  
para la Reintegración  
República de Colombia



- Most sending areas are also receiving areas
- 30 Municipalities concentrate 50% of entrance events. Ex-combatants are spreading, more areas receive ex-combatants than those that expel them
- 93% (715) of the municipalities with assisted participants have received moving ex-combatants.
- Geographic patterns in receiving areas persist.

# Institutional Response

Agencia Colombiana  
para la Reintegración  
República de Colombia



- 29 regional Service Centers and one Mobile Center that provide continued service and benefits.
- Constantly monitor an ex –combatant’s process without limiting his mobility within the country.
- “Information System for Reintegration” (SIR) which collects personal and progress reports of each individual enrolled in the reintegration process.
- The system allows the ACR to manage person’s contact info at any moment. ( having real time information)
- The contact and location information can be managed by all of the ACR’s Service Centers.
- The system’s flexibility allows for a person’s relocation to occur smoothly and effectively.
- Such platform enables to follow up the reintegration route and identifies variables that give support to the decision making process in the public policy.

# REINTEGRATION STRATEGY: A CHALLENGE THAT REQUIRES EVERYONE'S COMMITMENT

[alvarogonzalez@presidencia.gov.co](mailto:alvarogonzalez@presidencia.gov.co)

